

A close-up photograph of a white and brown Spalding hoodie. The hoodie features a dark green zipper and light-colored drawstrings. The Spalding logo is visible in the top left corner and on the chest area. The background is a soft, out-of-focus white fabric.

**SPALDING**  
MADE FOR THE GAME.

**SPALDING**

**2024 CATALOG**  
TEXTILES

# ABOUT

Since 1876, The Spalding® brand has been providing athletes worldwide with the best sporting goods. Spalding® is always striving to help athletes fulfil their potential and push their boundaries, regardless of their level of competition.

The Spalding® brand is featured in partnerships with many leagues and federations from around the globe. Basketball fans can always count on Spalding for creating quality, innovative products that ignite their inner confidence and enable them to play their best game.

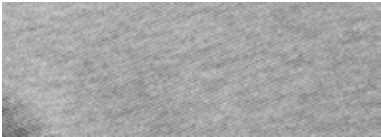
Spalding® is the world's premier basketball equipment provider. It is chosen by those with true dedication to and passion for the sport. Such athletes have the raw, unwavering, uncompromising inner confidence needed to defy all odds and overcome all obstacles.

SPALDING IS BASKETBALL.  
BASKETBALL IS LIFESTYLE.  
SPALDING IS LIFESTYLE.

# CONTENTS

<b>ON COURT.....</b>	<b>6</b>	<b>OUTER WEAR.....</b>	<b>34</b>
JAM TANK TOP .....	10	PADDED VEST .....	35
JAM SHORTS.....	10	PADDED JACKET.....	35
JAM TANK TOP WOMEN.....	11	PARKA .....	35
JAM SHORTS WOMEN .....	11	<b>ACCESSOIRES .....</b>	<b>36</b>
HUSTLE TANK TOP .....	12	TEAM BAG MEDIUM .....	37
HUSTLE SHORTS .....	12	TEAM BAG LARGE.....	37
SHOOTING SHIRT.....	13	TEAM TROLLEY*.....	37
ACTIVE SHORTS .....	13	TEAM BACKPACK.....	37
REVERSIBLE TANK TOP .....	14	ESSENTIAL BACKPACK .....	38
REVERSIBLE SHORTS.....	14	GYMBAG .....	38
DOUBLE FACE SET.....	15	PREMIUM SPORTS TROLLEY XL* .....	38
<b>ESSENTIALS .....</b>	<b>18</b>	BALL BAG.....	38
ESSENTIAL LOGO TEE .....	19	BATHING TOWEL .....	39
ESSENTIAL LOGO TEE WOMEN.....	19	BENCH TOWEL .....	39
ESSENTIAL POLO.....	20	SOCKS LOW CUT (2 PAIRS) .....	40
ESSENTIAL TEE .....	20	SOCKS MID CUT (3 PAIRS) .....	40
ESSENTIAL TEE WOMEN .....	20	SOCKS HIGH CUT (2 PAIRS) .....	40
<b>OFF COURT .....</b>	<b>22</b>	<b>REFEREE .....</b>	<b>41</b>
FLOW WARM UP		PRO REFEREE SHIRT .....	42
ZIPPER JACKET.....	23	REFEREE JACKET .....	42
FLOW WARM UP		REFEREE PANTS.....	42
LONG PANTS .....	23	<b>COLORSTYLES .....</b>	<b>43</b>
FLOW HOODY ZIPPER JACKET .....	24	<b>SALES CONDITIONS.....</b>	<b>51</b>
FLOW HOODY .....	24	<b>CONTACT .....</b>	<b>52</b>
FLOW ZIPPER JACKET .....	25		
FLOW LONG PANTS .....	25		
FLOW SHORTS.....	25		
FLOW HOODY ZIPPER JACKET WOMEN.....	26		
FLOW LONG PANTS WOMEN .....	26		
FLOW SHORTS WOMEN .....	26		
FAST HOODED LONGSLEEVE*.....	28		
FAST HOODED LONGSLEEVE WOMEN* .....	28		
FAST TEE* .....	29		
FAST TEE WOMEN* .....	29		
FUNK HOODY ZIPPER JACKET.....	31		
FUNK SLEEVELESS HOODY .....	31		
FUNK LONG PANTS .....	32		
FUNK SHORTS.....	32		

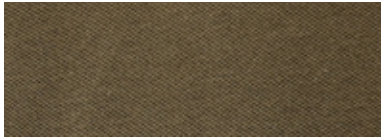
# COLOURWAYS



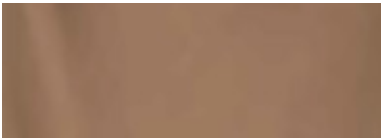
Grey (Melange)



Illuminated Yellow



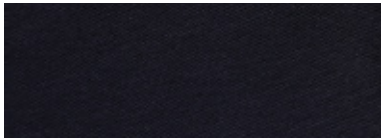
Khaki



Macchiato



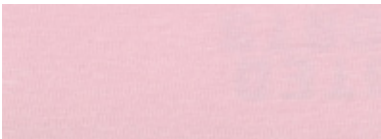
Mango Sorbet



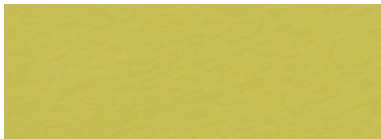
Night Sky / Navy Blue



Orange Ochre



Orchid Pink



Pickled Pepper



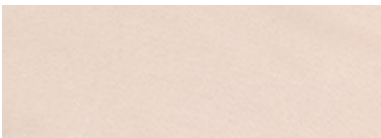
Purple Rose



Red



Skydiver / Royal Blue



Sand Grey



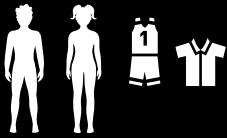
Blue Atoll



Fuchsia Rose

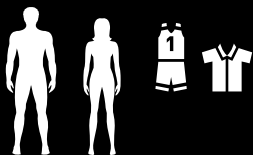


# SIZE CHART



Body measurements in cm		128	140	152	164
CHEST	Male	65 - 67	71 - 74	74 - 79	79 - 85
	Female	59 - 61	65 - 68	68 - 73	73 - 79
WAIST	Male	62 - 64	67 - 71	71 - 74	74 - 77
	Female	56 - 58	61 - 65	65 - 68	68 - 71

Body measurements in inch					
CHEST	Male	25,5 - 26,5	28 - 29	29 - 31	31 - 33,5
	Female	23,5 - 24	25,5 - 26,5	26,5 - 28,5	28,5 - 31
WAIST	Male	24,5 - 25	26,5 - 28	28 - 29	29 - 30,5
	Female	22 - 23	24 - 25,5	25,5 - 26,5	26,5 - 28



Body measurements in cm		XS	S	M	L	XL	2XL	3XL
CHEST	Men		92/94	94/98	98/102	102/106	106/110	110/114
	Women	88	92	96	100	104	108	112
WAIST	Men	71/76	78/82	82/86	86/90	90/94	94/98	98/102
	Women	81	88	94	98	102	106	110

Body measurements in inch								
CHEST	Men	33.8/35.8	36.2/37	37/38.5	38.5/40.1	40.1/41.7	41.7/43.3	43.3/44.8
	Women	34.6	36.2	37.8	39.3	40.9	42.5	44
WAIST	Men	28/30	30.7/32.2	32.2/33.8	33.8/35.4	35.4/37	37/38.5	38.5/40.2
	Women	31.9	34.6	37	38.6	40.2	41.7	43.3

A grayscale photograph of a woman standing with her arms crossed, wearing a Spalding basketball jersey and shorts. The jersey has 'SPALDING' printed on the chest. The shorts also have 'SPALDING' printed on the side. The background is a plain, light color.

# ON COURT

# PRINTING & SUBLIMATION

## PRINTING

Customization	Plotter 1c / per piece	Plotter 2-4c / per piece	High Quality (Precut)
Number small (10cm)	1c	2,00 €	
Number small (10cm)	Multi Color	2,50 €	
Number big (20cm)	1c	3,00 €	
Number big (20cm)	Multi Color	3,50 €	
Name or Club (max. 7,5cm height)	1c	4,00 €	
Name or Club (max. 7,5cm height)	Multi Color	4,50 €	
Name or Club arched (max. 7,5cm height)	1c	4,50 €	
Name or Club arched (max. 7,5cm height)	Multi Color	5,00 €	
Club or Sponsor Logo small (max. 10cm)	1c	4,00 €	
Club or Sponsor Logo small (max. 10cm)	Multi Color	5,00 €	
Club or Sponsor Logo big (max. 28cm)	1c	6,50 €	
Club or Sponsor Logo big (max. 28cm)	Multi Color	7,50 €	
Number small (10cm)	1c	3,00 €	3,00 €
Number big (20cm)	1c	4,50 €	4,50 €

## SUBLIMATION

### SUBLIMATION IN 9 POSSIBLE DESIGNS AND 42 COLOR AND 5 DIFFERENT FONT OPTIONS

#### SUBLIMATION CAN BE CREATED IN THREE WAYS:

- Choose our Inline "Jam" Design
- Choose one of our 8 free designs
- Have your own individual design created (upcharge of 100,- €)

Min. order quantity: 10 pcs.  
(30% upcharge for lower quantities)

Delivery: 8 weeks after final order confirmation

All items are 100% the same cut and sizing as our inline products!



Article No.	Model	Sizes	Retail €
SPALASMUC01	Creator Tank Top Men	140,152,164, S,M,L,XL,2XL,3XL	59,95 €
SPALASMUC02	Creator Shorts Men	140,152,164, S,M,L,XL,2XL,3XL	49,95 €
SPALASMUC03	Creator Tank Top Women	140,152,164, S,M,L,XL,2XL,3XL	59,95 €
SPALASMUC04	Creator Shorts Women	140,152,164, S,M,L,XL,2XL,3XL	49,95 €
SPALASMUC06	Creator Shooting Shirt	140,152,164, S,M,L,XL,2XL,3XL	69,95 €
PERSONALIZATION1	Individual Name (p. pc.)		2,00 €
PERSONALIZATION2	Individual Number (p. pc.)		3,00 €
Added Service	Logo Vectorization (p. Logo)		50,00 €

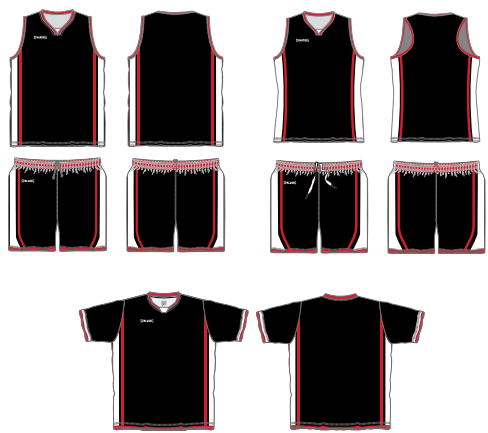
# FREE DESIGN



**OPTION 1**



**OPTION 2**



**OPTION 3**



**OPTION 4**



**OPTION 5**



**OPTION 6**



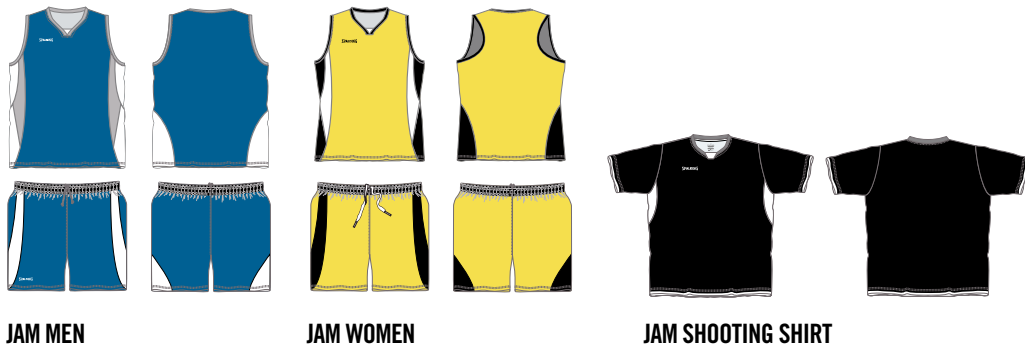
**OPTION 7**



**OPTION 8**



# INLINE DESIGN



JAM MEN

JAM WOMEN

JAM SHOOTING SHIRT

# COLOUR CHART

WHITE 1	LIGHT GREY 7	CREAM 13	LIME 19	LIGHT YELLOW 25	ILLUMINATING YELLOW 31	WIND CHIME 37	MACHIATTO 43
CORN YELLOW 2	MANGO SORBET 8	ORANGE OCHRE 14	RED 20	DARK RED 26	BORDEAUX 32	CONCRETE 38	SKYDIVER 44
PLUM 3	FUCHSIA ROSE 9	ORCHID PINK 15	PURPLE ROSE 21	VIOLET 27	NAVY 33	ANTHRACITE 39	NIGHT SKY 45
ROYAL BLUE 4	DOVE BLUE 10	SKY BLUE 16	CREATOR BLUE 22	OCEAN BLUE 28	MINT GREEN 34	BLACK 40	
TURQUOISE 5	PETROL 11	RACING GREEN 17	GREEN 23	TEAM GREEN 29	HOPE GREEN 35	BLUE ATOLL 41	
OLIVE 6	KHAKI 12	BROWN 18	DARK BROWN 24	GOLD 30	SAND 36	PICKLED PEPPER 42	

# FONTS FOR NAMES AND NUMBERS

**1** ABCDEFG - 0123456789  
BEBAS NEUE BOLD

**2** *ABCDEFGF* - *0123456789*  
ITC AVANT GARDE GOTHIC STD

**3** *ABCDEFGF* - *0123456789*  
HEMIHEADRG-BOLD ITALIC

**4** ABCDEFG - 0123456789  
AMERICAN CAPTAIN

**5** *ABCDEFGF* - *0123456789*  
MY FONT REGULAR



## JAM TANK TOP



**NEW PRICE**  
**YOUTH**  
 SRP **19,95 €**  
**ADULT**  
 SRP **24,95 €**

**FABRIC** 100% POLYESTER  
**WEIGHT** 160 GSM  
**SIZE RANGE** 128, 140, 152, 164, S, M, L, XL, XXL, XXXL

### ARTICLE NUMBER

40221001-WH/BK  
 40221001-WH/SG  
 40221001-BK/WH  
 40221001-RD/WH  
 40221001-RY/WH  
 40221001-GN/WH  
 40221004-WH/BK  
 40221004-WH/SG  
 40221004-BK/WH  
 40221004-RD/WH  
 40221004-RY/WH  
 40221004-GN/WH

### COLOUR

White/Black  
 White/Silver Grey\*  
 Black/White  
 Red/White  
 Royal/White  
 Green/White\*  
 White/Black  
 White/Silver Grey\*  
 Black/White  
 Red/White  
 Royal/White\*  
 Green/White\*

### SIZES

S, M, L, XL, XXL, XXXL  
 128, 140, 152  
 S, M, L, XL, XXL, XXXL  
 128\*, 140, 152, 164  
 S, M, L, XL, XXL, XXXL  
 128\*, 140, 152, 164  
 S, M, L, XL, XXL, XXXL  
 128, 140, 152, 164  
 S, M, L, XL, XXL, XXXL  
 128, 140, 152  
 S, M, L, XL, XXL, XXXL  
 128\*, 140, 152, 164  
 S, M, L, XL, XXL, XXXL  
 128\*, 140, 152, 164  
 S, M, L, XL, XXL, XXXL  
 128, 140, 152, 164  
 S, M, L, XL, XXL, XXXL  
 128\*, 140\*, 152\*

## JAM SHORTS



**NEW PRICE**  
**YOUTH**  
 SRP **19,95 €**  
**ADULT**  
 SRP **24,95 €**

**FABRIC** 100% POLYESTER  
**WEIGHT** 160 GSM  
**SIZE RANGE** 128, 140, 152, S, M, L, XL, XXL, XXXL

### ARTICLE NUMBER

40221004-WH/BK  
 40221004-WH/SG  
 40221004-BK/WH  
 40221004-RD/WH  
 40221004-RY/WH  
 40221004-GN/WH

### COLOUR

White/Black  
 White/Silver Grey\*  
 Black/White  
 Red/White  
 Royal/White  
 Green/White\*

### SIZES

S, M, L, XL, XXL, XXXL  
 128, 140, 152  
 S, M, L, XL, XXL, XXXL  
 128\*, 140, 152, 164  
 S, M, L, XL, XXL, XXXL  
 128\*, 140, 152, 164  
 S\*, M\*, L\*, XL\*, XXL\*, XXXL\*  
 128, 140, 152, 164  
 S, M, L, XL, XXL, XXXL  
 128, 140, 152





## JAM TANK TOP WOMEN



**FABRIC** 100% POLYESTER  
**WEIGHT** 160 GSM  
**SIZE RANGE** XS, S, M, L, XL, XXL, XXXL

**ADULT SRP** 24,95 €

### ARTICLE NUMBER

40221002-WH/SG  
 40221002-BK/WH  
 40221002-RD/WH  
 40221002-RY/WH  
 40221002-GN/WH

### COLOUR

White/Silver Grey  
 Black/White  
 Red/White  
 Royal/White  
 Green/White

### SIZES

XS, S, M, L, XL, XXL, XXXL  
 XS, S, M, L, XL, XXL, XXXL  
 XS, S, M, L, XL, XXL, XXXL  
 XS, S, M, L, XL, XXL, XXXL  
 XS, S, M, L, XL, XXL, XXXL



## JAM SHORTS WOMEN



**FABRIC** 100% POLYESTER  
**WEIGHT** 160 GSM  
**SIZE RANGE** XS, S, M, L, XL, XXL, XXXL

**ADULT SRP** 24,95 €

### ARTICLE NUMBER

40221005-WH/SG  
 40221005-BK/WH  
 40221005-RD/WH  
 40221005-RY/WH  
 40221005-GN/WH

### COLOUR

White/Silver Grey  
 Black/White  
 Red/White  
 Royal/White  
 Green/White

### SIZES

XS, S, M, L, XL, XXL, XXXL  
 XS, S, M, L, XL, XXL, XXXL  
 XS, S, M, L, XL, XXL, XXXL  
 XS, S, M, L, XL, XXL, XXXL  
 XS, S, M, L, XL, XXL, XXXL

# HUSTLE



## HUSTLE TANK TOP



**FABRIC** 100% POLYESTER  
**WEIGHT** 160 GSM  
**SIZE RANGE** 128, 140, 152, 164, S, M, L, XL, XXL, XXXL

**NEW PRICE**  
**YOUTH SRP** 19,95 €  
**ADULT SRP** 24,95 €

ARTICLE NUMBER	COLOUR	SIZES
40221107-WH/WH	White/White	S, M, L, XL, XXL, XXXL 128*, 140, 152, 164
40221107-BK/WH	Black/White	S, M, L, XL, XXL, XXXL 128*, 140, 152, 164
40221107-RD/WH	Red/White	S, M, L, XL, XXL, XXXL 128*, 140, 152, 164
40221107-RY/WH	Royal/White	S, M, L, XL, XXL, XXXL 128*, 140, 152, 164
40221107-YL/BK	Yellow/Black	S, M, L, XL, XXL, XXXL 128*, 140, 152, 164
40221107-NY/WH	Navy/White	S, M, L, XL, XXL, XXXL 128*, 140, 152, 164

## HUSTLE SHORTS



**FABRIC** 100% POLYESTER  
**WEIGHT** 160 GSM  
**SIZE RANGE** 128, 140, 152, 164, S, M, L, XL, XXL, XXXL

**NEW PRICE**  
**YOUTH SRP** 19,95 €  
**ADULT SRP** 24,95 €

ARTICLE NUMBER	COLOUR	SIZES
40221108-WH/WH	White/White	S, M, L, XL, XXL, XXXL 128*, 140, 152, 164
40221108-BK/WH	Black/White	S, M, L, XL, XXL, XXXL 128*, 140, 152, 164
40221108-RD/WH	Red/White	S, M, L, XL, XXL, XXXL 128*, 140, 152, 164
40221108-RY/WH	Royal/White	S, M, L, XL, XXL, XXXL 128*, 140, 152, 164
40221108-YL/BK	Yellow/Black	S, M, L, XL, XXL, XXXL 128*, 140, 152, 164
40221108-NY/WH	Navy/White	S, M, L, XL, XXL, XXXL 128*, 140, 152, 164





## SHOOTING SHIRT



**FABRIC** 100% POLYESTER  
**WEIGHT** 160 GSM  
**SIZES** 128, 140, 152, 164, S, M, L, XL, XXL, XXXL

**NEW PRICE**  
**YOUTH**  
 SRP **24,95 €**  
**ADULT**  
 SRP **29,95 €**

### ARTICLE NUMBER

40221409-WH/SG

40221409-BK/WH

40221409-GM/WH

### COLOUR

White/Silver Grey

Black/White

Grey Melange/White

### SIZES

S, M, L, XL, XXL, XXXL

128\*, 140, 152, 164

S, M, L, XL, XXL, XXXL

128\*, 140, 152, 164

S, M, L, XL, XXL, XXXL

128\*, 140, 152, 164



## ACTIVE SHORTS



**FABRIC** 100% POLYESTER  
**WEIGHT** 160 GSM  
**SIZES** S, M, L, XL, XXL, XXXL

**ADULT**  
 SRP **34,95 €**

### ARTICLE NUMBER

40221408-WH/SG

40221408-BK/WH

40221408-GM/WH

### COLOUR

White/Silver Grey\*

Black/White\*

Grey Melange/White\*

### SIZES

S, M, L, XL, XXL, XXXL

S, M, L, XL, XXL, XXXL

S, M, L, XL, XXL, XXXL

# REVERSIBLE



PRE-ORDER ONLY



PRE-ORDER ONLY



PRE-ORDER ONLY



PRE-ORDER ONLY

## REVERSIBLE TANK TOP



**FABRIC** 100% POLYESTER  
**WEIGHT** 140 GSM  
**SIZE RANGE** 128, 140, 152, 164, S, M, L, XL, XXL, XXXL

**NEW PRICE**  
**YOUTH SRP** 29,95 €  
**ADULT SRP** 34,95 €

### ARTICLE NUMBER

40221207-BK/WH

40221207-RD/WH

40221207-RY/WH

40221207-MS/BK

40221207-KH/SG

40221207-FU/BK

40221207-CM/KH

### COLOUR

Black/White

Red/White

Royal/White

Mango Sorb./Black

Khaki/Silver Grey\*

Fuchsia/Black\*

Camo/Khaki\*

### SIZES

S, M, L, XL, XXL, XXXL

128\*, 140, 152, 164

S, M, L, XL, XXL, XXXL

128\*, 140, 152, 164

S, M, L, XL, XXL, XXXL

128\*, 140, 152, 164

S, M, L, XL, XXL, XXXL

128, 140, 152, 164

S, M, L, XL, XXL, XXXL

128, 140, 152, 164

S, M, L, XL, XXL, XXXL

## REVERSIBLE SHORTS



**FABRIC** 100% POLYESTER  
**WEIGHT** 140 GSM  
**SIZE RANGE** 128, 140, 152, 164, S, M, L, XL, XXL, XXXL

**NEW PRICE**  
**YOUTH SRP** 29,95 €  
**ADULT SRP** 34,95 €

### ARTICLE NUMBER

40221208-BK/WH

40221208-RD/WH

40221208-RY/WH

40221208-MS/BK

40221208-KH/SG

40221208-FU/BK

40221208-CM/KH

### COLOUR

Black/White

Red/White

Royal/White

Mango Sorb./Black

Khaki/Silver Grey\*

Fuchsia/Black\*

Camo/Khaki\*

### SIZES

S, M, L, XL, XXL, XXXL

128\*, 140, 152, 164

S, M, L, XL, XXL, XXXL

128\*, 140, 152, 164

S, M, L, XL, XXL, XXXL

128\*, 140, 152, 164

S, M, L, XL, XXL, XXXL

128\*, 140, 152, 164

S, M, L, XL, XXL, XXXL

S, M, L, XL, XXL, XXXL

128, 140, 152, 164

S, M, L, XL, XXL, XXXL



# DOUBLE FACE



PRE-ORDER ONLY



PRE-ORDER ONLY



## DOUBLE FACE SET



*SOLD AS A SET*

**FABRIC** 100% POLYESTER  
**WEIGHT** 115 GSM  
**SIZE RANGE** 128, 140, 152, 164, XS, S

**YOUTH**  
**SRP 44,95 €**

ARTICLE NUMBER	COLOUR	SIZES
40221339-BK/WH	Black/White	128*, 140, 152, XS, S, M
40221339-RD/WH	Red/White	128*, 140, 152, XS, S, M
40221339-RY/WH	Royal/White	128*, 140, 152, XS, S, M
40221339-NY/WH	Navy/White*	128, 140, 152, XS, S, M
40221339-BA/BK	Blue Atoll/Black	128*, 140, 152, XS, S, M
40221339-IY/BK	Illuminated Yellow/Black*	128, 140, 152, XS, S, M









# ESSEN TIALS

# ESSENTIALS



## ESSENTIAL LOGO TEE



**FABRIC** 95% COTTON, 5% ELASTANE  
**WEIGHT** 200 GSM  
**SIZES** 128, 140, 152, 164, S, M, L, XL, XXL, XXXL

**NEW PRICE**

**YOUTH SRP 19,95 €**  
**ADULT SRP 29,95 €**

ARTICLE NUMBER	COLOUR	SIZES
40221626-BK	Black	S, M, L, XL, XXL, XXXL 128*, 140, 152, 164
40221626-WH	White	S, M, L, XL, XXL, XXXL 128*, 140, 152, 164
40221626-GM	Grey Melange	S, M, L, XL, XXL, XXXL 128*, 140, 152, 164
40221626-KH	Khaki*	S, M, L, XL, XXL, XXXL 128, 140, 152
40221626-NY/WH	Navy/White*	S, M, L, XL, XXL, XXXL 128, 140, 152
40221626-SK/NY	Skydiver/Navy*	S, M, L, XL, XXL, XXXL 128, 140, 152
40221626-OO/BK	Orange Ochre/Black*	S, M, L, XL, XXL, XXXL 128, 140, 152
40221626-OP	Orchid Pink*	128, 140, 152



## ESSENTIAL LOGO TEE WOMEN



**FABRIC** 95% COTTON, 5% ELASTANE  
**WEIGHT** 200 GSM  
**SIZE RANGE** XS, S, M, L, XL, XXL, XXXL

**ADULT SRP 29,95 €**

ARTICLE NUMBER	COLOUR	SIZES
40221627-BK	Black*	XS, S, M, L, XL, XXL, XXXL
40221627-WH	White*	XS, S, M, L, XL, XXL, XXXL
40221627-GM	Grey Melange*	XS, S, M, L, XL, XXL, XXXL
40221627-OP	Orchid Pink*	XS, S, M, L, XL, XXL, XXXL
40221627-PUR	Purple Rose*	XS, S, M, L, XL, XXL, XXXL
40221627-SK/WH	Skydiver/White*	XS, S, M, L, XL, XXL, XXXL



## ESSENTIAL POLO



**FABRIC** 100% COTTON  
**WEIGHT** 225 GSM  
**SIZES** XS, S, M, L, XL, XXL, XXXL

SRP **39,95 €**



PRE-ORDER ONLY

PRE-ORDER ONLY



PRE-ORDER ONLY

ARTICLE NUMBER	COLOUR	SIZES
40221632-BK/SG	Black/Silver grey*	XS, S, M, L, XL, XXL, XXXL
40221632-WH/NY	White/Navy	XS, S, M, L, XL, XXL, XXXL
40221632-GM/NY	Grey Melange/Navy	XS, S, M, L, XL, XXL, XXXL
40221632-KH/OO	Khaki/Orange Ochre*	XS, S, M, L, XL, XXL, XXXL
40221632-RD/NY	Red/Navy	XS, S, M, L, XL, XXL, XXXL
40221632-SK/NY	Skydiver/Navy*	XS, S, M, L, XL, XXL, XXXL
40221632-NY/LB	Navy/Light Blue	XS, S, M, L, XL, XXL, XXXL
40221632-MS/SKY	Mango sorb./Skydiver*	XS, S, M, L, XL, XXL, XXXL

## ESSENTIAL TEE



**FABRIC** 100% COTTON  
**WEIGHT** 190 GSM  
**SIZES** 128, 140, 152, 164, S, M, L, XL, XXL, XXXL

**NEW PRICE**

**YOUTH SRP 19,95 €**

**ADULT SRP 29,95 €**



PRE-ORDER ONLY

PRE-ORDER ONLY



ARTICLE NUMBER	COLOUR	SIZES
40221629-BK	Black	S, M, L, XL, XXL, XXXL 128*, 140, 152, 164
40221629-WH	White	S, M, L, XL, XXL, XXXL 128*, 140, 152, 164
40221629-GM	Grey Melange	S, M, L, XL, XXL, XXXL 128*, 140, 152, 164
40221629-KH	Khaki*	S, M, L, XL, XXL, XXXL 128, 140, 152
40221629-NY/WH	Navy/White*	S, M, L, XL, XXL, XXXL 128, 140, 152
40221629-RD/NY	Red/Navy	S, M, L, XL, XXL, XXXL 128*, 140, 152, 164
40221629-SK/WH	Skydiver/White*	S, M, L, XL, XXL, XXXL 128, 140, 152
40221629-OO/BK	Orange Ochre/Black*	S, M, L, XL, XXL, XXXL 128, 140, 152, 164
40221626-OP	Orchid Pink	128, 140, 152



PRE-ORDER ONLY



PRE-ORDER ONLY

PRE-ORDER ONLY

PRE-ORDER ONLY



PRE-ORDER ONLY

PRE-ORDER ONLY

## ESSENTIAL TEE WOMEN



**FABRIC** 100% COTTON  
**WEIGHT** 190 GSM  
**SIZES** XS, S, M, L, XL, XXL, XXXL

SRP **29,95 €**

ARTICLE NUMBER	COLOUR	SIZES
40221630-BK	Black	XS, S, M, L, XL, XXL, XXXL
40221630-WH	White	XS, S, M, L, XL, XXL, XXXL
40221630-GM	Grey Melange	XS, S, M, L, XL, XXL, XXXL
40221630-OP	Orchid Pink*	XS, S, M, L, XL, XXL, XXXL
40221630-PUR	Purple Rose*	XS, S, M, L, XL, XXL, XXXL







# OFF COURT

# FLOW

## FLOW WARM UP ZIPPER JACKET



**FABRIC** 100% POLYESTER  
**WEIGHT** 170 GSM  
**SIZE RANGE** 128, 140, 152,164, S, M, L, XL, XXL, XXXL

**ADULT**  
SRP **49,95 €**

ARTICLE NUMBER	COLOUR	SIZES
40231525-BK	Black	XS, S, M, L, XL, XXL, XXXL

## FLOW WARM UP LONG PANTS



**FABRIC** 100% POLYESTER  
**WEIGHT** 170 GSM  
**SIZE RANGE** 128, 140, 152,164, S, M, L, XL, XXL, XXXL

**ADULT**  
SRP **49,95 €**

ARTICLE NUMBER	COLOUR	SIZES
40231526-BK	Black	XS, S, M, L, XL, XXL, XXXL





NOT BRUSHED INSIDE

## FLOW HOODY ZIPPER JACKET



**FABRIC** 80% COTTON, 20% POLYESTER  
**WEIGHT** 290 GSM  
**SIZES** 128, 140, 152, S, M, L, XL, XXL, XXXL



**YOUTH**  
 SRP **49,95 €**  
**ADULT**  
 SRP **69,95 €**

### ARTICLE NUMBER

40221511-GM  
 40221511-KH  
 40221511-BK  
 40221511-NY

### COLOUR

Grey Melange  
 Khaki\*  
 Black  
 Navy\*

### SIZES

S, M, L, XL, XXL, XXXL  
 128\*, 140, 152, 164  
 S, M, L, XL, XXL, XXXL  
 128, 140, 152  
 S, M, L, XL, XXL, XXXL  
 128\*, 140, 152, 164  
 S, M, L, XL, XXL, XXXL  
 128, 140, 152



NOT BRUSHED INSIDE

## FLOW HOODY



**FABRIC** 80% COTTON, 20% POLYESTER  
**WEIGHT** 290 GSM  
**SIZES** 128, 140, 152, 164, S, M, L, XL, XXL, XXXL



**YOUTH**  
 SRP **44,95 €**  
**ADULT**  
 SRP **59,95 €**

### ARTICLE NUMBER

40221514-GM  
 40221514-KH  
 40221514-BK  
 40221514-NY

### COLOUR

Grey Melange  
 Khaki\*  
 Black  
 Navy

### SIZES

S, M, L, XL, XXL, XXXL  
 128\*, 140, 152, 164  
 S, M, L, XL, XXL, XXXL  
 128, 140, 152  
 S, M, L, XL, XXL, XXXL  
 128\*, 140, 152, 164  
 S, M, L, XL, XXL, XXXL



BRUSHED INSIDE

## FLOW ZIPPER JACKET



**FABRIC** 80% COTTON, 20% POLYESTER  
**WEIGHT** 290 GSM  
**SIZES** 128, 140, 152, S, M, L, XL, XXL, XXXL

**NEW PRICE**

**YOUTH**  
SRP **49,95 €**

**ADULT**  
SRP **64,95 €**

ARTICLE NUMBER	COLOUR	SIZES
40221517-GM	Grey Melange*	S, M, L, XL, XXL, XXXL 128, 140, 152
40221517-KH	Khaki*	S, M, L, XL, XXL, XXXL 128, 140, 152
40221517-BK	Black*	S, M, L, XL, XXL, XXXL 128, 140, 152
40221517-NY	Navy*	S, M, L, XL, XXL, XXXL



BRUSHED INSIDE

## FLOW LONG PANTS



**FABRIC** 80% COTTON, 20% POLYESTER  
**WEIGHT** 290 GSM  
**SIZES** 128, 140, 152, S, M, L, XL, XXL, XXXL

**NEW PRICE**

**YOUTH**  
SRP **44,95 €**

**ADULT**  
SRP **59,95 €**

ARTICLE NUMBER	COLOUR	SIZES
40221520-GM	Grey Melange	S, M, L, XL, XXL, XXXL 128, 140, 152, 164
40221520-KH	Khaki*	S, M, L, XL, XXL, XXXL 128, 140, 152, 164
40221520-BK	Black	S, M, L, XL, XXL, XXXL 128*, 140, 152, 164
40221520-NY	Navy	S, M, L, XL, XXL, XXXL



BRUSHED INSIDE

## FLOW SHORTS



**FABRIC** 80% COTTON, 20% POLYESTER  
**WEIGHT** 290 GSM  
**SIZES** 128, 140, 152, S, M, L, XL, XXL, XXXL

**NEW PRICE**

**YOUTH**  
SRP **29,95 €**

**ADULT**  
SRP **39,95 €**

ARTICLE NUMBER	COLOUR	SIZES
40221523-GM	Grey Melange	S, M, L, XL, XXL, XXXL 128*, 140, 152, 164
40221523-KH	Khaki*	S, M, L, XL, XXL, XXXL 128*, 140, 152
40221523-BK	Black	S, M, L, XL, XXL, XXXL 128*, 140, 152, 164
40221523-NY	Navy	S, M, L, XL, XXL, XXXL 128*, 140, 152, 164





NOT BRUSHED INSIDE

## FLOW HOODY ZIPPER JACKET WOMEN



**FABRIC** 80% COTTON, 20% POLYESTER  
**WEIGHT** 290 GSM  
**SIZES** XS, S, M, L, XL, XXL, XXXL

**ADULT**  
**SRP 69,95 €**

### ARTICLE NUMBER

40221512-GM  
 40221512-KH  
 40221512-BK  
 40221512-NY

### COLOUR

Grey Melange  
 Khaki\*  
 Black  
 Navy\*

### SIZES

XS, S, M, L, XL, XXL, XXXL  
 XS, S, M, L, XL, XXL, XXXL  
 XS, S, M, L, XL, XXL, XXXL  
 XS, S, M, L, XL, XXL, XXXL



NOT BRUSHED INSIDE

## FLOW LONG PANTS WOMEN



**FABRIC** 80% COTTON, 20% POLYESTER  
**WEIGHT** 290 GSM  
**SIZES** XS, S, M, L, XL, XXL, XXXL

**ADULT**  
**SRP 59,95 €**

### ARTICLE NUMBER

40221521-GM  
 40221521-BK

### COLOUR

Grey Melange  
 Black

### SIZES

XS, S, M, L, XL, XXL, XXXL  
 XS, S, M, L, XL, XXL, XXXL



NOT BRUSHED INSIDE

## FLOW SHORTS WOMEN



**FABRIC** 80% COTTON, 20% POLYESTER  
**WEIGHT** 290 GSM  
**SIZES** XS, S, M, L, XL, XXL, XXXL

**ADULT**  
**SRP 39,95 €**

### ARTICLE NUMBER

40221524-GM  
 40221524-BK

### COLOUR

Grey Melange  
 Black

### SIZES

XS, S, M, L, XL, XXL, XXXL  
 XS, S, M, L, XL, XXL, XXXL



# FAST



## FAST HOODED LONGSLEEVE\*



**FABRIC** 95% COTTON, 5% ELASTANE  
**WEIGHT** 200 GSM  
**SIZES** 128, 140, 152, S, M, L, XL, XXL, XXXL

**NEW PRICE**

**YOUTH**  
SRP **44,95 €**

**ADULT**  
SRP **59,95 €**

### ARTICLE NUMBER

40221714-GM/BK

40221714-BK/GM

40221714-KH/SG

40221714-00/SK

40221714-NY/SK

40221714-SK/NY

### COLOUR

Grey Melange/Black

Black/Grey Melange

Khaki/Silver Grey

Orange Ochre/ Skydiver

Navy/Skydiver

Skydiver/Navy

### SIZES

S, M, L, XL, XXL, XXXL

128, 140, 152

S, M, L, XL, XXL, XXXL

128, 140, 152

S, M, L, XL, XXL, XXXL

128, 140, 152

S, M, L, XL, XXL, XXXL

128, 140, 152

S, M, L, XL, XXL, XXXL

128, 140, 152

S, M, L, XL, XXL, XXXL

128, 140, 152



## FAST HOODED LONGSLEEVE WOMEN\*



**FABRIC** 95% COTTON, 5% ELASTANE  
**WEIGHT** 200 GSM  
**SIZES** XS, S, M, L, XL, XXL, XXXL

**ADULT**  
SRP **59,95 €**

### ARTICLE NUMBER

40221715-GM/BK

40221715-BK/GM

### COLOUR

Grey Melange/Black

Black/Grey Melange

### SIZES

XS, S, M, L, XL, XXL, XXXL

XS, S, M, L, XL, XXL, XXXL



## FAST TEE\*



**FABRIC** 95% COTTON, 5% ELASTANE  
**WEIGHT** 200 GSM  
**SIZES** 128, 140, 152, S, M, L, XL, XXL, XXXL



**YOUTH**  
 SRP **19,95 €**  
**ADULT**  
 SRP **29,95 €**

ARTICLE NUMBER	COLOUR	SIZES
40221726-GM/BK	Grey Melange/Black	S, M, L, XL, XXL, XXXL 128, 140, 152
40221726-BK/GM	Black/Grey Melange	S, M, L, XL, XXL, XXXL 128, 140, 152
40221726-KH/SG	Khaki/Silver Grey	S, M, L, XL, XXL, XXXL 128, 140, 152
40221726-00/SK	Orange Ochre/ Skydiver	S, M, L, XL, XXL, XXXL 128, 140, 152
40221726-NY/SK	Navy/Skydiver	S, M, L, XL, XXL, XXXL 128, 140, 152
40221726-SK/NY	Skydiver/Navy	S, M, L, XL, XXL, XXXL 128, 140, 152



## FAST TEE WOMEN\*



**FABRIC** 95% COTTON, 5% ELASTANE  
**WEIGHT** 200 GSM  
**SIZES** XS,S, M, L, XL, XXL, XXXL

**ADULT**  
 SRP **29,95 €**

ARTICLE NUMBER	COLOUR	SIZES
40221727-GM/BK	Grey Melange/Black	XS, S, M, L, XL, XXL, XXXL
40221727-BK/GM	Black/Grey Melange	XS, S, M, L, XL, XXL, XXXL
40221727-OP/NY	Orchid Pink/Navy	XS, S, M, L, XL, XXL, XXXL
40221727-PUR/WH	Purple Rose/White	XS, S, M, L, XL, XXL, XXXL





# FUNK



## FUNK HOODY ZIPPER JACKET



**FABRIC** 80% COTTON, 20% POLYESTER  
**WEIGHT** 290 GSM  
**SIZES** 128, 140, 152, S, M, L, XL, XXL, XXXL



**YOUTH**  
SRP **59,95 €**

**ADULT**  
SRP **79,95 €**

ARTICLE NUMBER	COLOUR	SIZES
40221811-GM/BK	Grey Melange/Black	S, M, L, XL, XXL, XXXL 128*, 140*, 152*
40221811-KH/SG	Khaki/Silver Grey*	S, M, L, XL, XXL, XXXL 128, 140, 152
40221811-NY/SK	Navy/Skydiver	S, M, L, XL, XXL, XXXL 128*, 140*, 152*
40221811-00/NY	Orange Ochre/ Navy*	S, M, L, XL, XXL, XXXL 128, 140, 152
40221811-RD/BK	Red/Black	S, M, L, XL, XXL, XXXL 128*, 140*, 152*



## FUNK SLEEVELESS HOODY\*



**FABRIC** 80% COTTON, 20% POLYESTER  
**WEIGHT** 290 GSM  
**SIZES** XS, S, M, L, XL, XXL, XXXL

**ADULT**  
SRP **59,95 €**

ARTICLE NUMBER	COLOUR	SIZES
40221834-GM/BK	Grey Melange/Black	S, M, L, XL, XXL, XXXL
40221834-KH/SG	Khaki/Silver Grey	S, M, L, XL, XXL, XXXL



## FUNK LONG PANTS



**FABRIC** 80% COTTON, 20% POLYESTER  
**WEIGHT** 290 GSM  
**SIZES** S, M, L, XL, XXL, XXXL

**ADULT**  
**SRP 69,95 €**

### ARTICLE NUMBER

40221820-GM/BK  
 40221820-KH/SG  
 40221820-NY/SK  
 40221820-OO/NY  
 40221820-RD/BK

### COLOUR

Grey Melange/Black  
 Khaki/Silver Grey\*  
 Navy/Skydiver  
 Orange Ochre/ Navy\*  
 Red/Black

### SIZES

S, M, L, XL, XXL, XXXL  
 S, M, L, XL, XXL, XXXL  
 S, M, L, XL, XXL, XXXL  
 S, M, L, XL, XXL, XXXL  
 S, M, L, XL, XXL, XXXL



## FUNK SHORTS



**FABRIC** 80% COTTON, 20% POLYESTER  
**WEIGHT** 290 GSM  
**SIZES** XS, S, M, L, XL, XXL, XXXL

**ADULT**  
**SRP 49,95 €**

### ARTICLE NUMBER

40221823-GM/BK

### COLOUR

Grey Melange/Black

### SIZES

S, M, L, XL, XXL, XXXL





# OUTER WEAR

# JACKETS



## PADDED VEST



**FABRIC** 100% POLYAMIDE (NYLON 380T)  
**WEIGHT** 100 GSM  
**SIZES** XS, S, M, L, XL, XXL, XXXL

**ADULT**  
**SRP 79,95 €**

ARTICLE NUMBER	COLOUR	SIZES
40221937-BK	Black	XS, S, M, L, XL, XXL, XXXL
40221937-KH	Khaki	XS, S, M, L, XL, XXL, XXXL
40221937-GR	Grey	XS, S, M, L, XL, XXL, XXXL



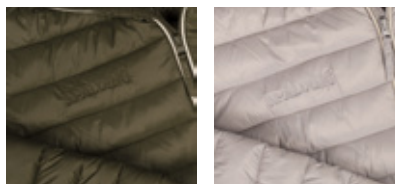
## PADDED JACKET



**FABRIC** 100% POLYAMIDE (NYLON 380T)  
**WEIGHT** 100 GSM  
**SIZES** XS, S, M, L, XL, XXL, XXXL

**ADULT**  
**SRP 99,95 €**

ARTICLE NUMBER	COLOUR	SIZES
40221936-BK	Black	XS, S, M, L, XL, XXL, XXXL
40221936-KH	Khaki*	XS, S, M, L, XL, XXL, XXXL
40221936-GR	Grey*	XS, S, M, L, XL, XXL, XXXL



## PARKA



**FABRIC** 100% POLYAMIDE (NYLON 380T)  
**WEIGHT** 100 GSM  
**SIZES** S, M, L, XL, XXL, XXXL

**ADULT**  
**SRP 179,95 €**

ARTICLE NUMBER	COLOUR	SIZES
40221938-BK	Black	XS, S, M, L, XL, XXL, XXXL
40221938-KH	Khaki*	XS, S, M, L, XL, XXL, XXXL
40221938-GR	Grey*	XS, S, M, L, XL, XXL, XXXL







# ACCES SOIRES

SPALDING



## TEAM BAG MEDIUM

**FABRIC** 80% POLYESTER, 10% THERMOPLASTIC  
ELASTOMERS, 10% POLYPROPYLENE  
**SIZE** 55 X 30 X 30 CM / 50L

SRP **59,95 €**

**ARTICLE NUMBER**  
40222101-BK/WH

**COLOUR**  
Black/White



## TEAM BAG LARGE

**FABRIC** 80% POLYESTER, 10% THERMOPLASTIC  
ELASTOMERS, 10% POLYPROPYLENE  
**SIZE** 60 X 35 X 35 CM / 80L

SRP **69,95 €**

**ARTICLE NUMBER**  
40222102-BK/WH

**COLOUR**  
Black/White



## TEAM TROLLEY\*

**FABRIC** 80% POLYESTER, 10% THERMOPLASTIC  
ELASTOMERS, 10% POLYPROPYLENE  
**SIZE** 60 X 35 X 35 CM / 80L

SRP **89,95 €**

**ARTICLE NUMBER**  
300453801

**COLOUR**  
Black/White



## TEAM BACKPACK

**FABRIC** POLYESTER 600\*600D / NYLON 420  
**SIZE** 50 X 40 X 25 CM / 40L

SRP **59,95 €**

**ARTICLE NUMBER**  
40222104-BK/WH

**COLOUR**  
Black/White



## ESSENTIAL BACKPACK

FABRIC POLYESTER 600\*600D / NYLON 420  
SIZE 30 X 44 X 13 CM / 20L

SRP **59,95 €**

ARTICLE NUMBER

40222105-BK/WH

COLOUR

Black/White



## GYMBAG

FABRIC 100% POLYESTER  
SIZE 45,5 X 37 CM

SRP **14,95 €**

ARTICLE NUMBER

40222109-BK

COLOUR

Black



## PREMIUM SPORTS TROLLEY XL\*

FABRIC 100% POLYESTER  
SIZE 100 L

SRP **199,95 €**

ARTICLE NUMBER

300454001

COLOUR

Black



## BALL BAG

FABRIC POLYESTER  
SIZE 72 X 50 X 24.5 CM  
FITS 6 BASKETBALLS

SRP **59,95 €**

ARTICLE NUMBER

40222110-BK

COLOUR

Black



## BATHING TOWEL

FABRIC 100% COTTON  
 SIZE 70 X 140 CM

**NEW PRICE** ADULT SRP **59,95 €**

ARTICLE NUMBER	COLOUR
300980801	White/Black



## BENCH TOWEL

FABRIC 100% COTTON  
 SIZE 60 X 100 CM

**NEW PRICE** ADULT SRP **39,95 €**

ARTICLE NUMBER	COLOUR
300980901	White



## PERFORMANCE SOCKS

FABRIC 80% POLYESTER, 18% POLYAMIDE, 2% SPANDEX  
 SIZE 31-35, 36-40, 41-45, 46-50

**NEW PRICE** ADULT SRP **9,95 €**

ARTICLE NUMBER	COLOUR	SIZE
300319601	Black	31-35, 36-40, 41-45, 46-50
300319602	White	31-35, 36-40, 41-45, 46-50



## SOCKS LOW CUT (2 PAIRS)

FABRIC 80% COTTON, 18% POLYAMID, 2% SPANDEX  
 SIZE 35-38, 39-42, 43-46, 47-50, 51-52

**NEW PRICE** ADULT SRP **9,95 €**

ARTICLE NUMBER	COLOUR	SIZE
300319001	White	35-38, 39-42, 43-46, 47-50, 51-52



## SOCKS MID CUT (3 PAIRS)

FABRIC 80% COTTON, 18% POLYAMID, 2% SPANDEX  
 SIZE 36-40, 41-45, 46-50

**NEW PRICE** ADULT SRP **14,95 €**

ARTICLE NUMBER	COLOUR	SIZE
300319401	White	36-40, 41-45, 46-50
300319402	Black	36-40, 41-45, 46-50





# REFE REE





## PRO REFEREE SHIRT

**FABRIC** 100% POLYESTER  
**WEIGHT** 200 GSM  
**SIZE** XS, S, M, L, XL, XXL, XXXL

**ADULT**  
**SRP 59,95 €**

ARTICLE NUMBER	COLOUR	SIZE
40222001-GR/BK	Grey/Black	XS, S, M, L, XL, XXL, XXXL
40222001-BK/GR	Black/Grey*	XS, S, M, L, XL, XXL, XXXL
40222001-LI/BK	Lime/Black*	XS, S, M, L, XL, XXL, XXXL



## REFEREE JACKET

**FABRIC** 100% POLYESTER  
**WEIGHT** 90 GSM  
**SIZE** XS, S, M, L, XL, XXL, XXXL

**ADULT**  
**SRP 69,95 €**

ARTICLE NUMBER	COLOUR	SIZE
40222003-BK	Black	XS, S, M, L, XL, XXL, XXXL



## REFEREE PANTS

**FABRIC** 96% POLYESTER, 4% ELASTANE  
**WEIGHT** 275 GSM  
**SIZE** XS, S, M, L, XL, XXL, XXXL

**ADULT**  
**SRP 79,95 €**

ARTICLE NUMBER	COLOUR	SIZE
40222002-BK	Black	XS, S, M, L, XL, XXL, XXXL



# COLOR STYLES



**FUNK HOODY ZIPPER JACKET**  
40221811-RD/BK  
RED/BLACK



**ESSENTIAL LOGO TEE**  
40221626-BK  
BLACK



**ESSENTIAL POLO**  
40221632-RD/NY  
40221632-WH/NY  
RED/NAVY BLUE  
WHITE/NAVY BLUE

**ESSENTIAL TEE**  
40221629-RD/NY  
RED/NAVY BLUE



**FUNK LONG PANTS**  
40221820-RD/BK  
RED/BLACK



**FLOW LONG PANTS**  
40221520-BK  
BLACK



**FLOW SHORTS**  
40221523-RK  
BLACK

**FUNK HOODY ZIPPER JACKET**  
40221811-BA/NY  
SKYDIVER/ NAVY BLUE

---



**FLOW ZIPPER JACKET**  
40221517-NY  
NAVY BLUE

---



**PADDED VEST**  
40221937-GR  
GREY

---



**FAST TEE**  
40221811-BA/NY  
SKYDIVER/ NAVY BLUE

---



**FUNK LONG PANTS**  
40221820-NY/SK  
NAVY/ SKYDIVER  
40221820-BA/NY  
SKYDIVER/ NAVY BLUE

---



**FLOW LONG PANTS**  
40221520-NY  
NAVY BLUE

---



**FLOW SHORTS**  
40221523-NY  
NAVY BLUE

---



**FLOW HOODY**  
40221514-NY  
NAVY BLUE

---



**FAST HOODY**  
40221714-NY/SK  
NAVY / SKYDIVER



**FUNK HOODY ZIPPER JACKET**  
40221811-BA/NY  
SKYDIVER/ NAVY BLUE



**ESSENTIAL LOGO TEE**  
40221626-SK/NY  
SKYDIVER / NAVY



**ESSENTIAL TEE**  
40221629-NY/WH  
NAVY BLUE / WHITE



**ESSENTIAL POLO**  
40221632-SK/NY  
SKYDIVER / NAVY BLUE



**FUNK LONG PANTS**  
40221820-NY/SK  
NAVY / SKYDIVER







**FUNK HOODY ZIPPER JACKET**  
40221511-GM  
GREY MELANGE



**FLOW HOODY**  
40221514-BK  
BLACK

**PADDED JACKET**  
40221936-GR  
GREY



**FUNK SLEEVELESS HOODY**  
40221834-GM/BK  
GREY MELANGE / BLACK

**FLOW ZIPPER JACKET**  
40221517-GM  
GREY MELANGE



**FLOW LONG PANTS**  
40221520-BK  
BLACK

**FUNK LONG PANTS**  
40221820-GM/BK  
GREY MELANGE / BLACK



**FUNK SHORTS**  
40221823-GM/BK  
GREY MELANGE / BLACK



**FLOW SHORTS**  
40221523-GM  
GREY MELANGE



**FUNK HOODY ZIPPER JACKET**  
40221811-KH/SG  
KHAKI / SILVER GREY

---



**PADED JACKET**  
40221936-KH  
KHAKI

---

**ESSENTIAL LOGO TEE**  
40221626-WH  
WHITE

---



**FLOW ZIPPER JACKET**  
40221517-KH  
KHAKI

---



**ESSENTIAL TEE**  
40221629-KH  
KHAKI

---



**FLOW HOODY**  
40221514-KH  
KHAKI

---



**FUNK LONG PANTS**  
40221820-KH/SG  
KHAKI / SILVER GREY

---



**FLOW LONG PANTS**  
40221520-KH  
KHAKI

---



**ESSENTIALS POLO**  
40221632-WH  
WHITE

---



**FUNK HOODY ZIPPER JACKET**  
40221811-00/NY  
ORANGE OCHRE / NAVY BLUE



**FLOW ZIPPER JACKET**  
40221517-NY  
NAVY BLUE



**ESSENTIAL POLO**  
40221632-NY/LB  
NAVY BLUE / LIGHT BLUE  
40221632-MS/SKY  
MANGO SORBET / SKYDIVER



**FAST TEE**  
40221834-00/SK  
ORANGE OCHRE / SKYDIVER

**FUNK LONG PANTS**  
40221820-00/NY  
ORANGE OCHRE / NAVY



**FLOW LONG PANTS**  
40221520-NY  
NAVY

**FLOW SHORTS**  
40221523-NY  
NAVY



# SALES CONDITIONS

## PRICES

Our price lists are not special alters and are rather net and without any discounts. They can be changed without prior notice.

## SPECIAL OFFERS

Our offers are without obligation and subject to sale. The special alters and sales of agents, representatives, or any other intermediary are only valid if they have been agreed to in writing by our firm. The prices of our goods are always according to the rates which are valid on the day of delivery, irrespective of the date the order was recorded. Any change of an economic, social or fiscal nature in the conditions of the offer could result in a review of our prices.

## PAYMENT

All invoices are payable within 30 days of the date of the invoice, unless agreed otherwise in writing and by mutual consent and confirmed by means of the signature of both parties. All payments must be made with the bank account number stated on the invoice and in the manner stated on the invoice. Claims cannot result in a postponement of payment, and the existence of a dispute will only result in the payment being qualified. Any outstanding invoice will legally accrue interest of 1 % per month from the due date, without any notice of default being necessary. This surcharge applies from the date payment is due up to the date that payment is made in full. A part of a month will be calculated as a whole month. The customer will be charged all the costs incurred in the recovery of the payment, both legal and extra-legal. The latter is set at 10% of the unpaid sum, with a minimum of € 250.00, without prejudice to the right of UNITED SPORTS BRANDS EUROPE to claim the actual costs. Any claims concerning invoicing must be reported to UNITED SPORTS BRANDS EUROPE by means of a registered Letter at the very latest within fourteen (14) calendar days of the date of invoicing.

If no communication has been received within this period, the customer will be understood to have accepted the information on the invoice as being correct.

## RESERVATION OF TITLE

The goods sold will remain the property of UNITED SPORTS BRANDS EUROPE until the customer has paid the full purchase price plus any interest and delayed payment and increased charges (including transport costs). Nevertheless, the customer shall assume the risk.

## DISPATCH-DELIVERIES

Unless there are special instructions from the customer, we will select the method of dispatch individually for each delivery. The goods will be transported at the cost and responsibility of the addressee, even if we dispatch them carriage paid and irrespective of the means of transport or mode of delivery used. On receipt, the customer must satisfy himself regarding the packages and communicate any complaints to the transport company within the period legally stipulated. The customer must provide evidence of any deficiency or damage. We will observe the stated delivery date to the best of our ability, but we may not be held liable for any delay, nor may a delay be considered grounds for cancelling the order, claiming interest or compensation.

## COMPLAINTS - RETURN OF GOODS

In the event that the goods received do not correspond to what is stated on the invoice, the customer must inform us immediately, at the very latest within forty-eight hours of receiving the dispatch List. This List must be included with the complaint of the customer. Any complaint concerning the quality of a product must be accompanied by:

- a) a specimen of the article with the complaint reported,
- b) to the degree that such an instance can be specified, a sample of the product concerned in its original

packaging, which carries references for identification purposes. The goods cannot be returned without our prior agreement and must be sent to us carriage paid.

The returned goods must be in perfect condition and carefully packed in their original packaging without any changes to their references. They must keep their Label as well as the stamps or brands applied in order to permit their retail sale. Any verbal agreement that is not in agreement with these general terms will only be valid if it has been confirmed by us in writing.

## TERMS OF THE CUSTOMER

The mere fact that we have made a delivery results in the unconditional acceptance of these general sales terms and conditions. Any proviso accompanying the order of the customer that conflicts with these general terms and conditions or adds a new factor will not be accepted, and it is not necessary that we inform the customer of this. The same applies to the provision of jurisdiction.

Spalding reserve the right to amend product design and specification without prior notice.

Subject to alteration. Errors and misprints excepted.

© Back cover picture by Cedric Warlop

Date: November 2023

# CONTACT



# UNITED SPORTS BRANDS



+32 (14) 85 47 85



United Sports Brands Europe  
Janssen-Pharmaceuticaan 4  
Post Box 4  
2440 Geel  
Belgium



Monday -Thursday  
8:30 -17:00  
Friday  
8:30 -15:00



[sales@unitedspb.eu](mailto:sales@unitedspb.eu)





JANSSEN-PHARMACEUTICALAAN 4, POST BOX 4 - 2440 GEEL, BELGIUM  
© 2023 UNITED SPORTS BRANDS | [WWW.UNITEDSPB.EU](http://WWW.UNITEDSPB.EU)

